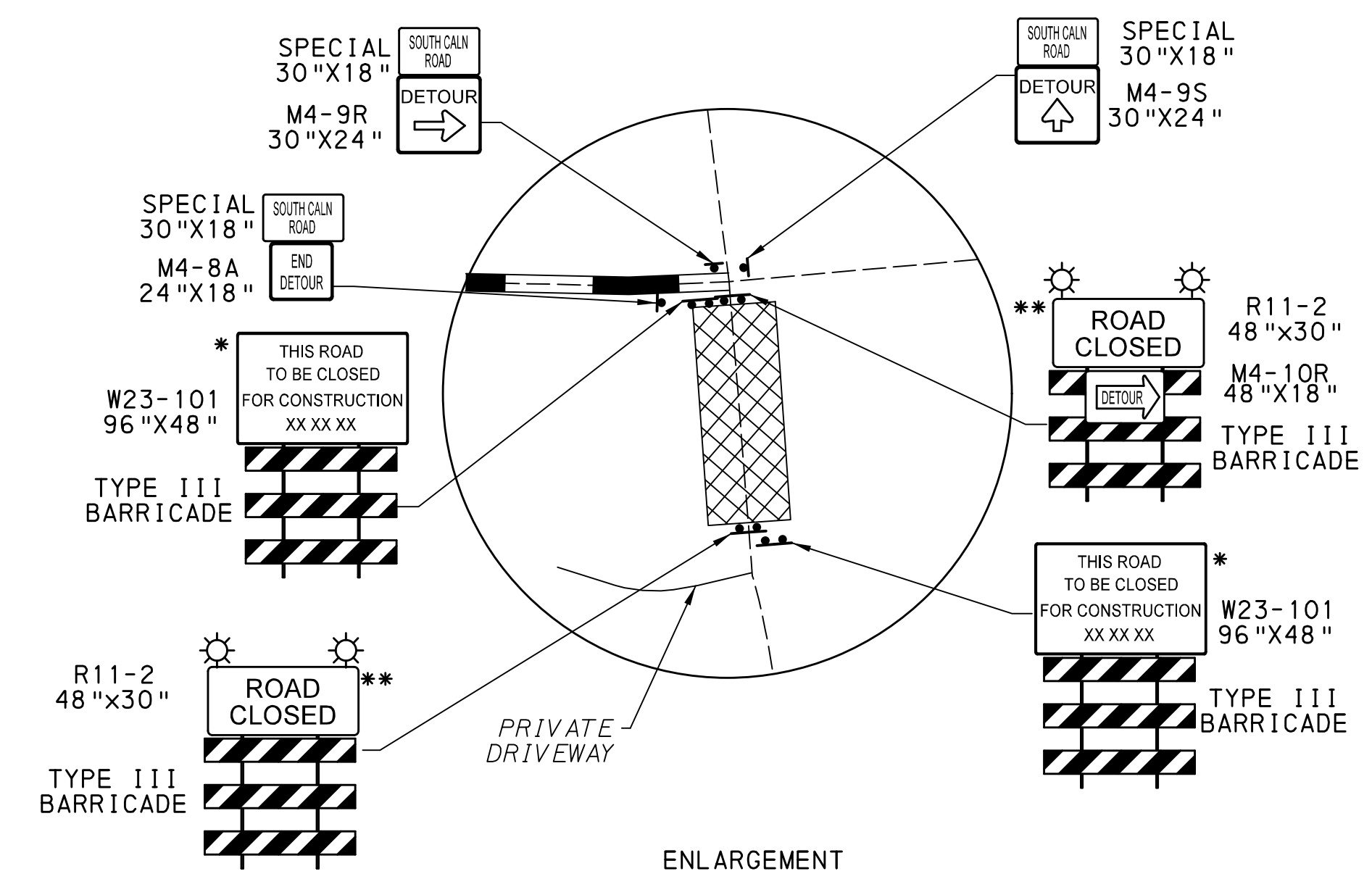
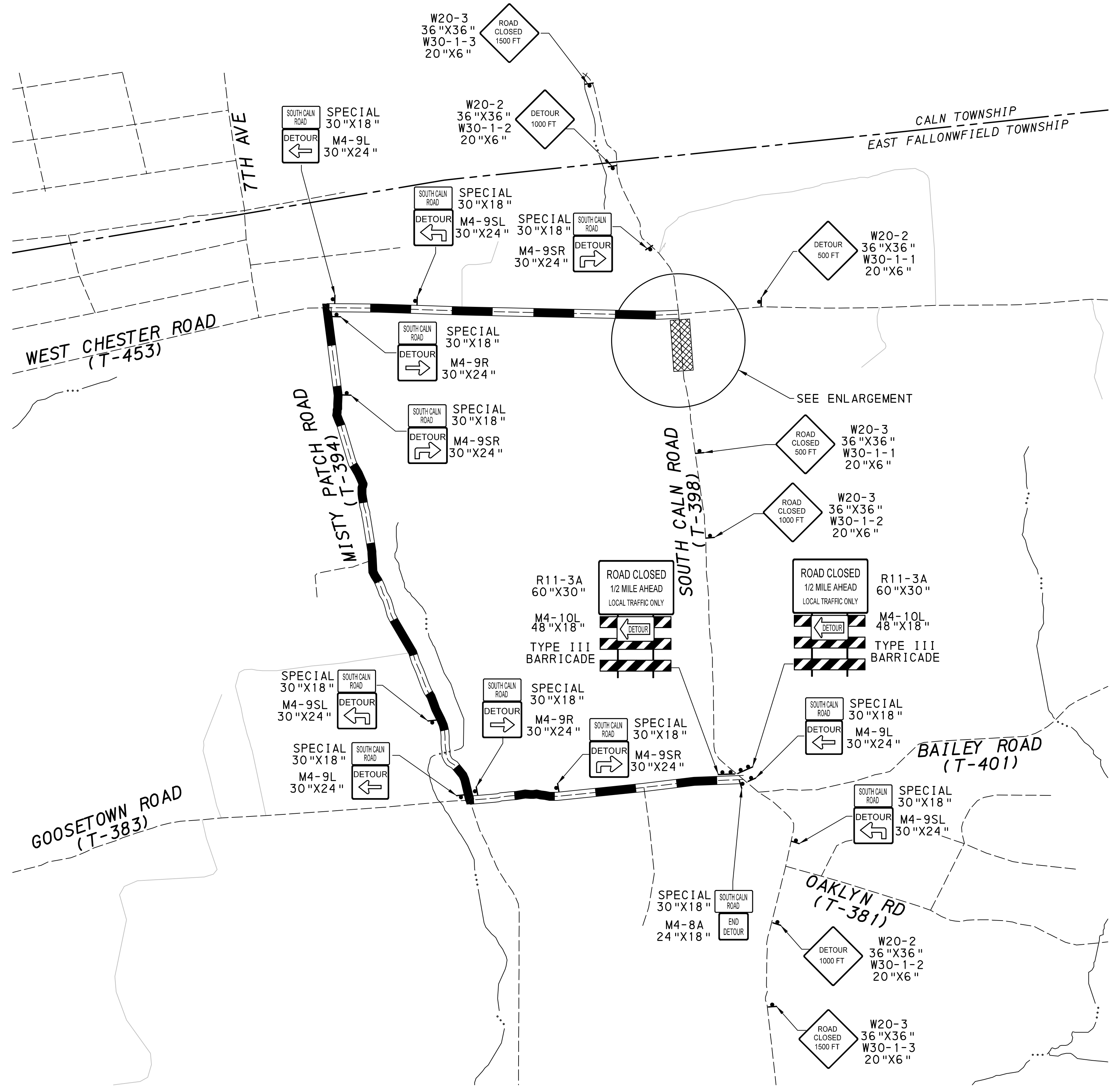
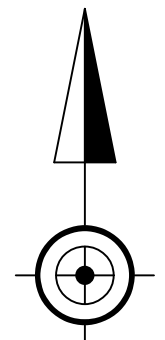


DISTRICT	COUNTY	ROUTE	SECTION	SHEET
6-0	CHESTER	T-398	-	14 OF 15
EAST FALLOWFIELD TOWNSHIP				
REVISION NUMBER	REVISIONS	DATE	BY	



LEGEND

- DETOUR ROUTE
- STATE ROAD
- TOWNSHIP ROAD
- OTHER ROAD
- WATERWAYS
- MUNICIPAL BOUNDARY
- WORK AREA
- SIGN
- SIGN ON TYPE III BARRICADE
- WARNING LIGHTS, TYPE B

* THE ROADWAY SHALL BE POSTED A MINIMUM OF 14 DAYS IN ADVANCE OF THE DETOUR AND CLOSING ROADWAY.

** EXTEND TYPE III BARRICADES ACROSS ENTIRE ROADWAY

0 400 800 FEET

J:\EFTO\00004 West Chester Rd South Caln Rd\CADD\Plan\15_top01.dgn
 11/17/2019 11:32:36 PM 1:400 spence

TRAFFIC PLANNING AND DESIGN, INC.
 www.TrafficPD.com | 610.326.3100 | TPD@TrafficPD.com

DATE: 10/31/2019 | PROJECT DESIGNER: SEP | JOB NO: EFTO.00004
TRAFFIC CONTROL PLAN
THIS IS A COPY. THE ORIGINAL DRAWING IS ON FILE WITH TRAFFIC PLANNING AND DESIGN, INC. ANY AND ALL LIABILITY IS LIMITED TO THE ORIGINAL, UP TO AND INCLUDING THE LAST REVISIONS.

DISTRICT	COUNTY	ROUTE	SECTION	SHEET
6-0	CHESTER	T-398	-	15 OF 15
EAST FALLOWFIELD TOWNSHIP				
REVISION NUMBER	REVISIONS	DATE	BY	

TRAFFIC CONTROL GENERAL NOTES

THIS WORK CONSISTS OF THE MAINTENANCE OF TRAFFIC AND THE PROTECTION OF THE TRAVELING PUBLIC APPROACHING THE CONSTRUCTION AREA AND WITHIN THE LIMITS OF CONSTRUCTION.

FURNISH, ERECT, PLACE AND MAINTAIN TRAFFIC CONTROL SIGNS AND DEVICES AND MAINTAIN TRAFFIC DURING HOURS OF CONSTRUCTION AND AT ALL OTHER TIMES IN ACCORDANCE WITH THE METHODS INDICATED ON THESE DRAWINGS AND,

1. THE SPECIAL PROVISIONS OF THE CONTRACT.
2. PA CODE, TITLE 67, CHAPTER 212, OFFICIAL TRAFFIC CONTROL DEVICES.
3. PDT PUBLICATION 213, TEMPORARY TRAFFIC CONTROL GUIDELINES.
4. PDT PUBLICATION 35, APPROVED CONSTRUCTION MATERIALS (BULLETIN 15).
5. PDT PUBLICATION 408, SPECIFICATIONS.
6. MANUAL ON UNIFORM TRAFFIC CONTROL DEVICES (MUTCD).

IMMEDIATELY UPON COMPLETION OF THE WORK, REMOVE THE DEVICES. THE MUNICIPALITY WILL REMOVE ANY TRAFFIC CONTROL DEVICES ERECTED BY THE MUNICIPAL FORCES.

COVER OR REMOVE ALL SIGNS NOT IN USE.

MAINTAIN ACCESS TO PRIVATE DRIVEWAY. ANY WORK THAT REQUIRES THE DRIVEWAY TO BE CLOSED SHALL BE COORDINATED WITH THE PROPERTY OWNER.

THESE PLANS HAVE BEEN REVIEWED AND ARE IN COMPLIANCE WITH STANDARDS PRESCRIBED IN CHAPTER 212 OF TITLE 67 PA CODE, AS CURRENTLY AMENDED. THE APPROVAL OF THIS TRAFFIC CONTROL PLAN IS NOT INTENDED TO RELIEVE THE CONTRACTOR OF THE RESPONSIBILITY FOR THE PROTECTION OF THE PUBLIC AND THE CONSTRUCTION PERSONNEL. STANDARDS SPECIFIED IN SECTION 901.3(g) OF PENNDOT PUBLICATION 408 ARE MINIMUM AND ADDITIONAL PROTECTION MAY BE NEEDED IF PROBLEMS ARE ENCOUNTERED DURING THE TERM OF THE CONTRACT. CONSTANTLY REVIEW THIS PLAN FOR ADEQUACY AND RECOMMEND CHANGES FOR DEPARTMENT APPROVAL WHEN INADEQUACIES ARE DISCOVERED.

CONSTRUCTION SEQUENCE

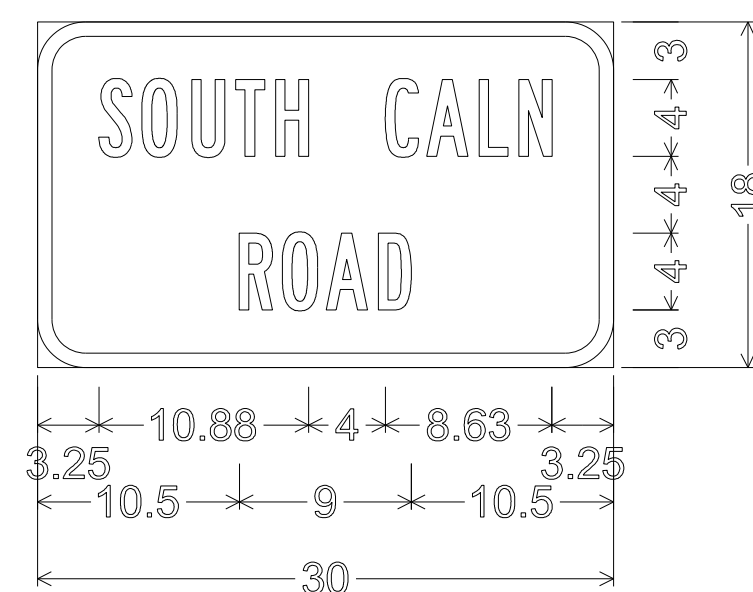
1. INSTALL ROAD CLOSED SIGNING TWO WEEKS BEFORE ROAD CLOSURE.
2. INSTALL DETOUR SIGNING PER THE DETOUR PLAN. KEEP SIGNS COVERED UNTIL DETOUR IS TO BE ACTIVATED.
3. CLOSE ROADWAY AND ACTIVATE DETOUR. MAINTAIN ACCESS TO PRIVATE DRIVEWAY THROUGHOUT CONSTRUCTION. COORDINATE WITH PROPERTY OWNER FOR DRIVEWAY ADJUSTMENT AND ACCESS NEEDS.
4. PLACE ESPC MEASURES PER THE ESPC PLANS.
5. EXCAVATE AND RECONSTRUCT THE ROADWAY. INSTALL PROPOSED DRAINAGE AS SHOWN ON PLAN. ADJUST PRIVATE DRIVEWAY FOR FINAL CONDITIONS. UTILIZE PATA 101, 102, 103, 106, 107, AND 108 FOR SHORT-TERM TRAFFIC CONTROL REQUIRED FOR CONSTRUCTION OF DRAINAGE ALONG WEST CHESTER ROAD.
6. PLACE FINAL STABILIZATION AND SEEDING PROJECT WIDE, INCLUDING ANY PLANTINGS REQUIRED ON THE PRIVATE PROPERTY OWNER'S FRONTAGE. PLACE FINAL WEARING COURSE PROJECTWIDE.
7. REMOVE TEMPORARY ESPC MEASURES ONCE FINAL STABILIZATION OCCURS.
8. REMOVE DETOUR AND OPEN ROADWAY TO TRAFFIC.

TABULATION OF TRAFFIC CONTROL SIGNS

INCLUDED IN ITEM 0901-0001
(FOR INFORMATION ONLY)

SIGN	SIZE	NUMBER REQUIRED	REMARKS
SPECIAL	30"x18"	15	"SOUTH CALN ROAD"
M4-8A	24"x18"	2	
M4-9L	30"x24"	3	
M4-9R	30"x24"	3	
M4-9S	30"x24"	1	
M4-9SL	30"x24"	3	
M4-9SR	30"x24"	3	
M4-10L	48"x18"	2	
M4-10R	48"x18"	1	
R11-3A	60"x30"	2	"1/2 MILE AHEAD"
R11-2	48"x30"	2	
W20-2	36"x36"	3	
W20-3	36"x36"	4	
W23-101	96"x48"	2	
W30-1-1	20"x6"	2	
W30-1-2	20"x6"	3	
W30-1-3	20"x6"	2	

NOTES: SPECIAL SIGNS TO HAVE BLACK LEGEND AND BORDER ON ORANGE RETRO REFLECTIVE BACKGROUND.



2.50" Radius, 0.75" Border, Black on Orange;

"SOUTH" B 2K;

"CALN" B 2K;

"ROAD" B 2K;

Table of distances between letter and object lefts.

	S	O	U	T	H	C	A	L	N	
3.25	2.25	2.50	2.38	2.00	5.75	2.13	2.75	2.13	1.63	3.25

	R	O	A	D	
10.50	2.25	2.25	2.75	1.75	10.50

TABULATION OF TRAFFIC CONTROL DEVICES

INCLUDED IN ITEM 0901-0001
(FOR INFORMATION ONLY)

STAGE OF CONSTRUCTION	WARNING LIGHTS, TYPE B	TYPE III BARRICADE
	EACH	EACH
ENTIRE PROJECT	4	10
TOTALS	4	10

TABULATION OF TRAFFIC CONTROL PAY ITEMS

0901 0231 DAY	0901 0240 SF	REMARKS
100	100	AS DIRECTED
		ENTIRE PROJECT
100	100	TOTALS

RECOMMENDED _____ 20

DISTRICT TRAFFIC ENGINEER



TRAFFIC PLANNING AND DESIGN, INC.

www.TrafficPD.com | 610.326.3100 | TPD@TrafficPD.com

DATE: 10/31/2019 | PROJECT DESIGNER: SEP | JOB NO: EFTO.00004

TRAFFIC CONTROL PLAN

THIS IS A COPY. THE ORIGINAL DRAWING IS ON FILE WITH TRAFFIC PLANNING AND DESIGN, INC. ANY AND ALL LIABILITY IS LIMITED TO THE ORIGINAL, UP TO AND INCLUDING THE LAST REVISIONS.

DRN BY: JAS